

Press release
Herning, Denmark
April 2023

Driving Performance: JOST with strong solutions at Transport 2023 in Herning

In Denmark JOST will present innovative new products and tried-and-tested solutions in line with three significant industry trends: assistance systems for drivers (#jostassist), eco-friendly products (#jostgreen) and digital solutions (#jostdigital). On the exhibition stand in the hall and outside the audience will experience live demonstrations of the KKS automatic coupling system, intelligent axle systems with the JOST Drum Modular Axle series, in addition to special answers for the Scandinavian market such as the new ROCKINGER Rear Tail System.

The Transport 2023, taking place from 20 to 22 April, is Scandinavia's leading transport fair. Brian Knudsen, Area Manager Denmark at JOST World, is looking forward to the show: "Our first presence at Transport 2021 was a success. We exhibited the smart and automatic coupling system KKS for the first time in Scandinavia. At this year's show we will even have a stand outside to demonstrate the KKS live. JOST's assistance systems like the KKS make the job of a truck driver easier and safer. Furthermore, we are happy to present proven products and new solutions including the ROCKINGER RO*RS CM75 Rear Tail System."

KKS automatic coupling by remote control: faster, safer, more efficient

Premiere in Denmark: At Transport 2023 JOST presents the KKS to the Danish audience for the first time. KKS enables drivers to couple and uncouple semi-trailers via remote control without leaving the driver's cabin – automatically, safely and quickly. Climbing out of the cabin, cranking down the landing gear and manually connecting the spiral cable, air and brake connections are all a thing of the past. Efficiency, convenience and safety gains are made possible with just one product. The KKS automatic coupling system thus represents the future of logistics and is a key component of autonomous driving. Alongside the exhibit at the stand, there will also be live demonstrations: Visitors can have a look at the automatic coupling process every day in the outside area stand U0380.

RO*RS CM75 Rear Tail System: holistic solution with proven and innovative components

The RO*RS CM75 Rear Tail System is a brand new and holistic solution from ROCKINGER. The system consists of the cross member RO*CM75N, the side plates SPUB and the rigid underrun bar RO*RUB75 and is homologated according to ECE. With the RO*RS CM75 ROCKINGER contributes even more to the safety of commercial vehicles.

Drawbar Finder: smart assistance for the coupling process

ROCKINGER will present a further innovation at the show in Herning in form of the Drawbar Finder. Here, a camera sits in a central and protected position above the towing hitch, functioning as an extra

set of eyes and preventing misalignment of the drawbar eye. By providing both horizontal and vertical guidance, it enables precise coupling, which in turn raises efficiency and helps prevent accidents. The driver no longer needs to get out of the truck to check that the drawbar eye is aligned correctly. The Drawbar Finder is another proof for JOST's innovative engineering. JOST develops advanced assistance systems to enable the transport industry to face current challenges.

JOST DMA: new drum modular axle

In order to provide the right solutions to meet the needs of customers all over the world, JOST is adding the DMA series drum modular axle to its axle portfolio. The drum modular axles in the DMA series ensure maximum flexibility for every transport application because they can be combined with suspension systems from the DLS range. The drum modular axle combines a robust tubular axle with a modular leaf spring system, which can be adapted to match the customer's individual specifications. The DMA's most striking feature is the external brake drum design, which allows the brake linings to be replaced without having to disassemble the wheel hub – making it extremely easy to service and maintain. In addition, the proven brake design requires minimal repair effort and offers maximum benefit to customers.

To ensure optimum brake performance at all times and enable ideal wear behaviour, great emphasis has been placed on the interplay between the brake drum and lining during development. This is supported by gradual interaction with an automatic, self-regulating slack adjuster, which controls the brake pressure depending on the wear conditions. At Transport 2023 JOST introduces the DMA to the Danish market.

More than just a standard landing gear: the JOST Modul landing gears

JOST landing gears are extremely versatile and have proven themselves time and again in daily use. Their flexible, modular design makes it easy to adapt to all important customer requirements, from standard implementations to specialised applications. JOST will present several highlights from its Modul family of landing gears at the show such as the Modul B as an E-Drive version (best-in-class landing gear with additional reinforcement and electric motor for universal application) and Modul CS (for liquid and bulk tippers, which require stabilising landing gears in the rear for support during unloading). For those who particularly value low weight, JOST will also present Modul CA (an especially light aluminium landing gear with new S foot), which impresses with a weight saving of 41 kg compared to Modul B, as well as the newest and lightest member of the landing gear family, the aluminium drop leg FA027, with a total weight of just 37 kg per set.

JOST ZGA command steer axle with electronic steering system EF-S from TRIDEC

Tight depots, narrow city streets and a 16.5-meter-long trailer that needs to be steered safely – all challenges that push conventional axle systems to their limits and demand a command steer axle. The JOST ZGA is convincing in a wide range of applications and can be used with all common steering systems, whether mechanical, hydraulic or electronic. It also offers other outstanding performance features, such as the low steering roll radius. At Transport 2023, JOST shows the ZGA combined with the electronic steering system EF-S from TRIDEC. Here, up to three ZGA axles can be used. The steering angle can be easily adapted to the available space for installation and the required manoeuvrability.

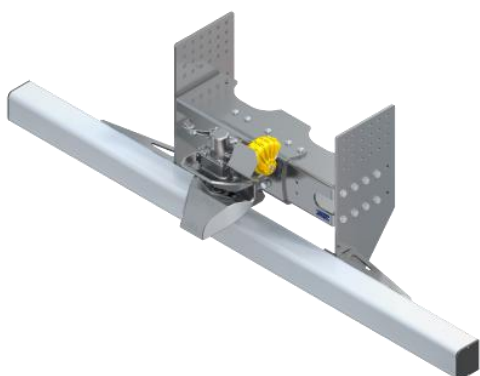
JOST World stand: Hall L9218, outside U0380 (with live demonstrations of the KKS)

Image material

Automatic coupling system KKS:



RO*RS CM75 Rear Tail System:



ROCKINGER Drawbar Finder upgrade kit:



DMA drum modular axle:



Modul E-Drive electric landing gear:



Aluminium drop leg:



ZGA Command Steer Axle with EF-S electronic steering system from TRIDEC:



About JOST:

JOST is a world-leading producer and supplier of safety-critical systems for the commercial vehicle industry. Under the umbrella brand of JOST, the comprehensive range of products is broken down into systems for applications on the road and in agriculture:

The JOST brand includes fifth wheel couplings, landing gears, ball bearing turntables, king pins and container locks as well as components for alternating systems. Truck and trailer axles are also sold under the JOST brand. The tradition-steeped ROCKINGER brand comprises the core components of towing hitches, drawbar eyes and drawbars for transporters and trucks. TRIDEC offers steering systems and axle suspensions for trailers.

ROCKINGER products are also used in agricultural applications. Quicke has been part of the JOST family since February 2020 and specialises in agricultural front loaders and equipment.

JOST currently employs over 3,600 staff worldwide and has sales and production sites in over 20 countries and on all five continents. JOST has been listed on the Frankfurt Stock Exchange. Further information on JOST can be found here: www.jost-world.com

Press contact:

Christin Zindritsch, Manager Marketing Communications, christin.zindritsch@jost-world.com